

Slim and Fast, Rugged and Durable CRUISE™ 1 Smart Industrial Terminal

Made to fit modern office use with 5.2-inch full screen, it's easy to carry and bring you the ultimate experience. The slim body, powerful performance, better endurance, CRUISE 1 has the perfect balance of all you want, all our considerations are for your more efficient management.



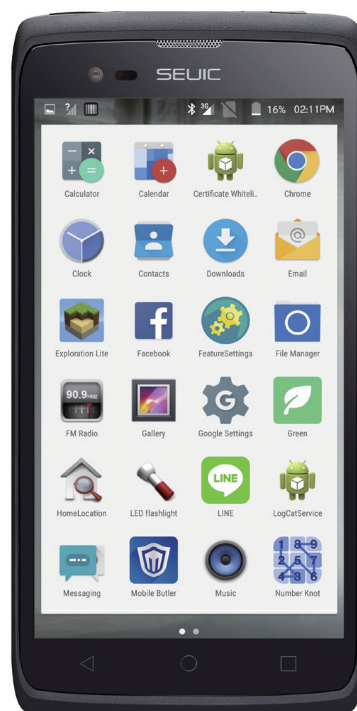
Slim and Fast, Unprecedented Efficiency

High-End Configuration, Strong Performance

- Android 9.0, 8-core 1.8 GHz processor, 4G RAM+64G ROM, everything runs more smoothly.
- 227g weight only, easy to carry.
- 5.2-inch FHD display with no physical keypad design, delicate and sharp.
- 13MP rear camera, less than 0.3s focus, greatly improves image data capture.

Fast Charge, Long Battery Life

- Best fast charge technology in the industry, 3 hours charge can support a full day high-load use.
- 4500mAh large capacity battery can delivery 12 hours of power.



Professional Design, Precise Capture

- International standard scan engine, improves working efficiency.
- Front NFC reading design, unprecedented back contact working method.
- GPS, Beidou, Glonass 3 mode positioning technology, fast and accurate.

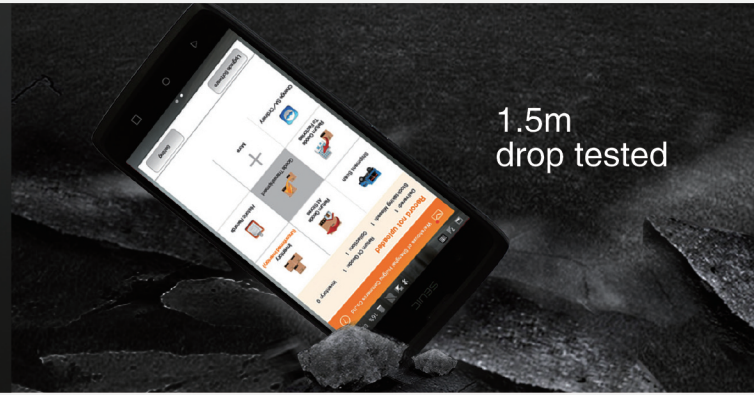
Fast Collection, Real-Time Transmission

- 4G full network, DSDS, great adaptability.
- Dual-frequency Wi-Fi, independent signal amplifying technology, seamless switching among APs, better than all competitors on the market.

Rugged and Reliable



IP67



1.5m
drop tested

Went through 60 plus reliable tests, applicable in the harshest environments, life span can reach over 5 years



Dust
(IP67)



Low Temperature
(-20°C)



High Temperature
(+50°C)



Port Operation
(Salt-spray)



Rain
(IP67)



Industrial Oil
Environment



Long-term
Glare Radiation

Extremely High Security and Advanced Data Protection Technology

Trust rom security zone to provide users with a high security level storage of data

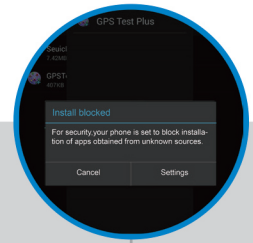


PSAM card encryption, suitable for banking and financial industry (optional)

Built-in international first-line SOTI remote management software can keep track of equipment status at any time



Self-developed application with certified IP to protect data and permissions on the device

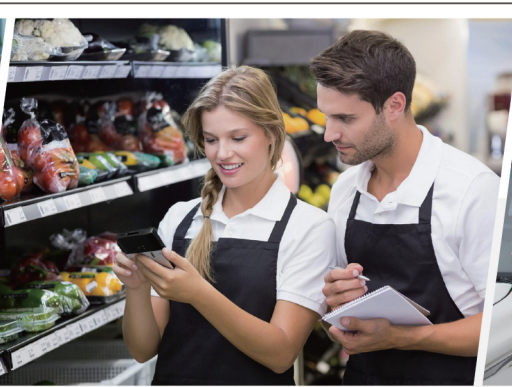


Application installation authorization, further improves safety of the device

Typical Applications



Logistics/Delivery



Retail/Sales Management



Public Service/Mobile Law Enforcement



Scan to get the latest product information

Jiangsu SEUIC Technology Co., Ltd.
Address: No.15 Xinghuo Road, Jiangbei New Area, Nanjing
Postcode: 210012
E-mail: Marketing@seuic.com

en.seuic.com